

Howard Morley
& Sons



PCM

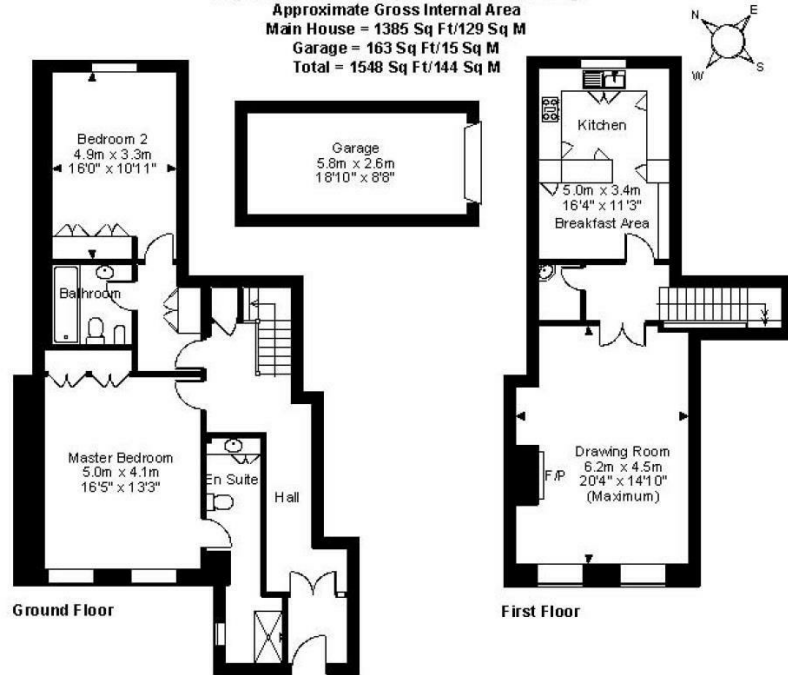
£2,500 PCM

Peper Harow House

Peper Harow, GU8 6BG



Peper Harow Park, Peper Harow, Godalming
 Approximate Gross Internal Area
 Main House = 1385 Sq Ft/129 Sq M
 Garage = 163 Sq Ft/15 Sq M
 Total = 1548 Sq Ft/144 Sq M



FOR ILLUSTRATIVE PURPOSES ONLY - NOT TO SCALE
 The position & size of doors, windows, appliances and other features are approximate only.
 ©ehouse. Unauthorised reproduction prohibited. Drawing ref. dig.8114539WFF

2	
2	
1	

Energy Efficiency Rating		Current	Potential
Very energy efficient - lower running costs			
(92 plus)	A		
(81-91)	B		
(69-80)	C	74	77
(55-68)	D		
(39-54)	E		
(21-38)	F		
(1-20)	G		
Not energy efficient - higher running costs			
England & Wales		EU Directive 2002/91/EC	

Agents Note: Whilst every care has been taken to prepare these particulars, they are for guidance purposes only. All measurements are approximate and are for general guidance purposes only and whilst every care has been taken to ensure their accuracy, they should not be relied upon and potential buyers/tenants are advised to recheck the measurements

Howard Morley & Sons

OFFICE ADDRESS
 276 High Street
 Guildford
 Surrey
 GU1 3JL

OFFICE DETAILS
 01483 575 304
 lettings@hmorley.co.uk
 hmorley.co.uk